

All European
 Luke Wright
 308 E. Parent
 48067 MI Royal Oak
 Phone no. +18002553876
 E-mail lwright@alleuro.com

Customer data

.....
Name

.....
Street

.....
Postcode *Town/City*

.....
Country

.....
Licence plate number *Kilometer/mileage reading*

.....
VIN

 **Timing belt data**

Audi A6

Year of constr. 2000-2001 • 2771 ccm • 142 kW

<https://www.hgs-data.com/index.php/timingbelt/index/vehicleId/2310>

Contents

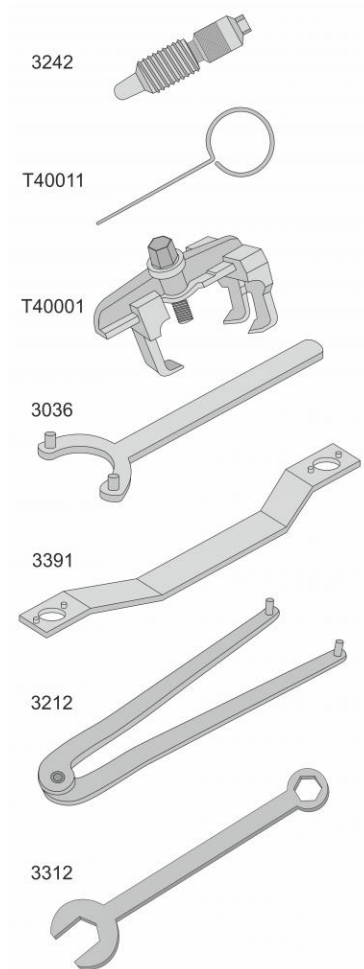
1	Version: Timing belt	2
1.1	Timing belt: Renewal interval	2
1.2	Tools	2
1.3	Dismounting 1	3
1.4	Dismounting 2	5
1.5	Mounting 2	6
1.6	Mounting 1	7

1 Version: Timing belt

1.1 Timing belt: Renewal interval

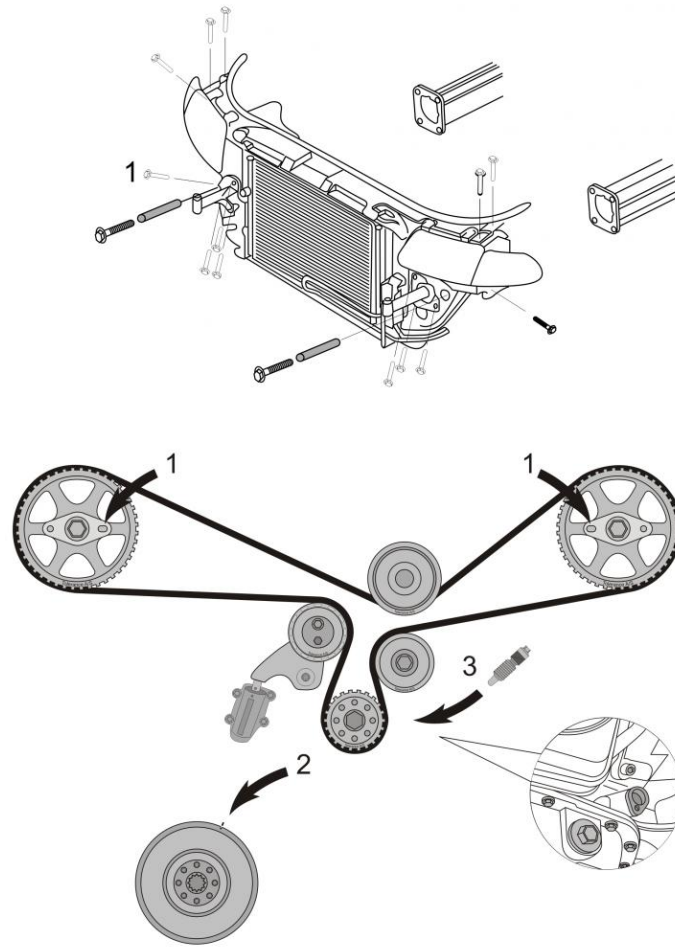
- 105,000 mi

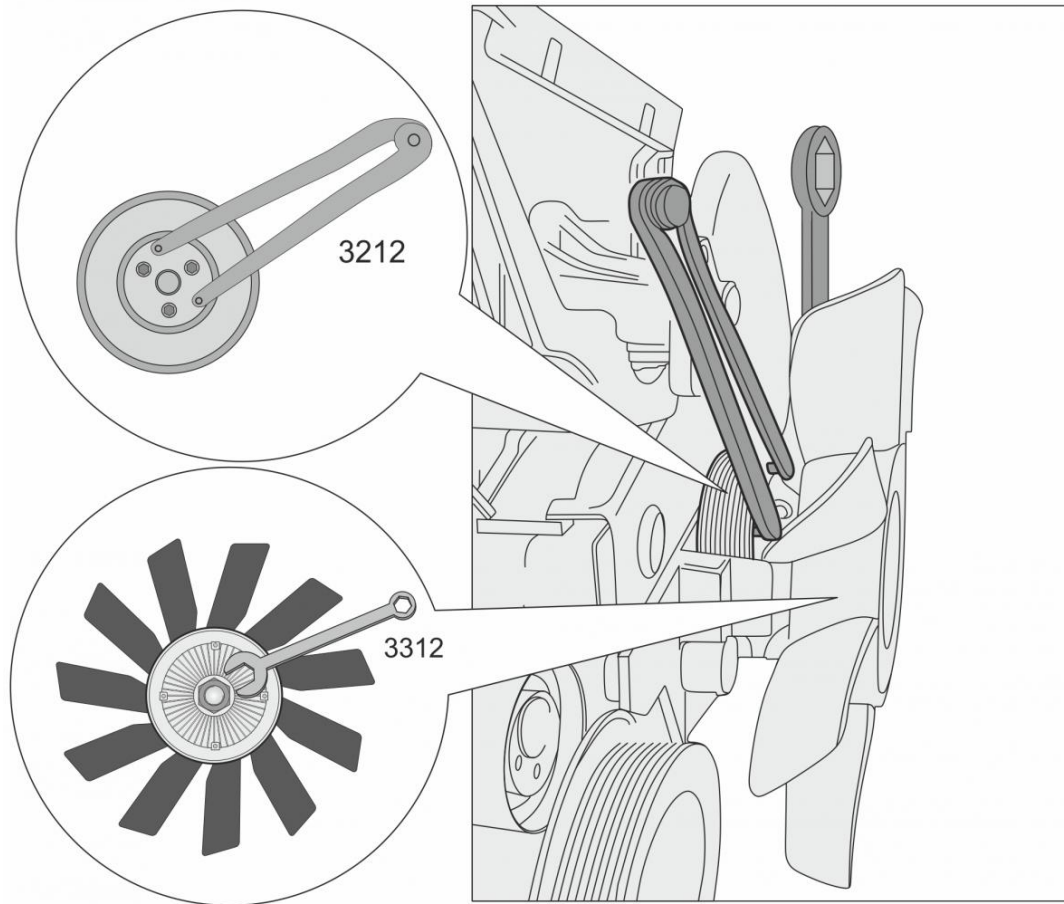
1.2 Tools



- 3242 = Crank locking tool.
- T40011 = Locking pin for belt tensioners
- T40001 = Cam gear pulling tool.
- 3036 = Camshaft gear holding tool.
- 3391 = Camshaft gear locking tool.
- 3312 = holding tool for viscose coupling on the fan.
- 3212 = holding tool for water pump pulley.

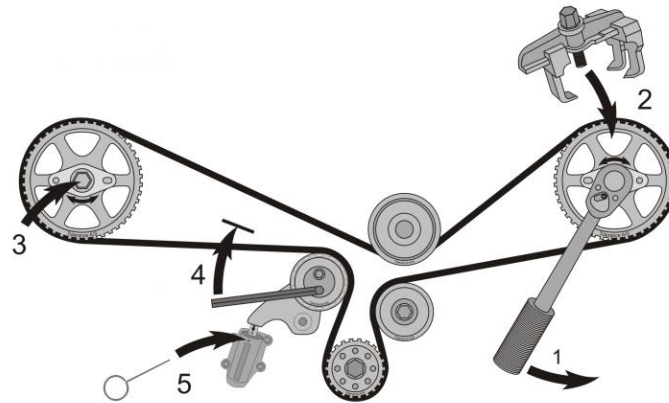
1.3 Dismounting 1





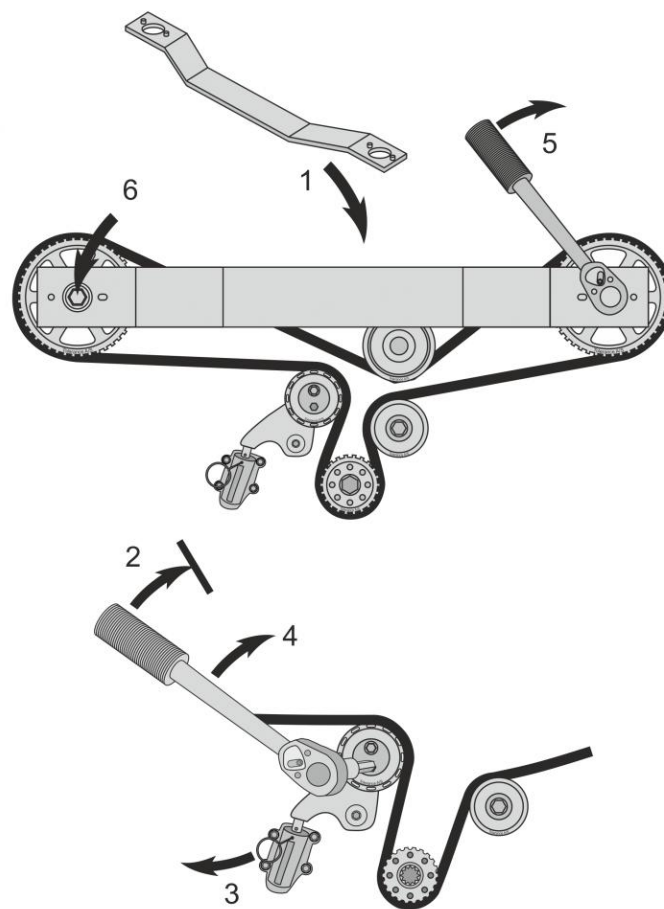
- Dismount engine cover.
- Remove noise insulating plate.
- Remove the front bumper.
- Pull the front end until it meets the holder bolts.
- Hold the water pump pulley with tool 3212. Remove the fan blade with tool 3312 (left-handed thread).
- Remove V-ribbed belt.
- Remove multi-belt tensioners.
- Dismount upper timing belt cover.
- Make sure that the oval holes on the camshaft sprocket mounting plates align and point to each other.
- Check that markings on crankshaft pulley / vibration damper agree with markings on the cover over the toothed belt.
- Dismount crank position sensor.
- Lock crank with tool "3242"
- Remove crankshaft pulley / vibration damper.
- Dismount lower timing belt cover.

1.4 Dismounting 2



- Loosen timing sprocket center mounting bolt.
- Remove the camshaft pulleys from the taper with tool "T40001" (remains on).
- Loosen belt tensioner.
- Turn belt tensioner clockwise.
- Lock hydraulic belt tensioner with tool "T40011".
- Dismount timing belt.
- Examine/change gaskets, water pump, idler pulleys, and belt tensioners.

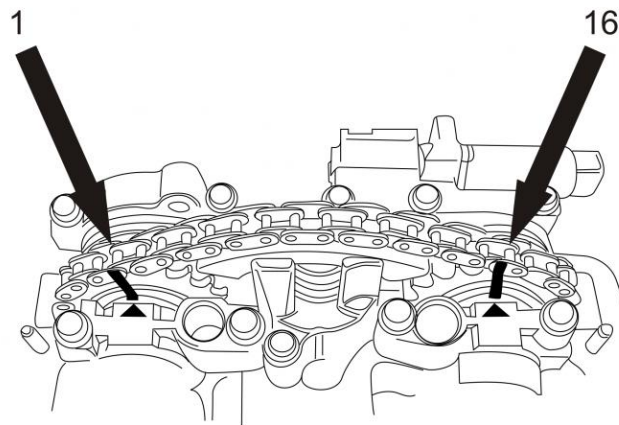
1.5 Mounting 2



- Check that the crankshaft is locked.
- Mount both camshaft pulleys loosely, so that they can rotate without backlash.
- Check that there are 16 rollers between the markings of the camshafts gears.
- Mount timing belt.
- Lock camshaft sprockets with tool "3391".
- Turn belt tensioner clockwise with an Allen key.
- Dismount pin on belt tensioner.
- Turn the belt tensioner clockwise with 15 Nm.
- Tighten belt tensioner 23 Nm.
- Tighten camshaft wheels 55 Nm. (use new bolts and counter hold).
- Install the crankshaft pulley / vibration damper, tighten 23 Nm.
- Dismount all locking tools.
- Turn crankshaft 720°.
- Lock crank with tool "3242"

- Check that the camshaft sprockets can be locked with tool "3391".
- If the tool does not fit, then repeat the procedure again.
- Install the remaining parts in opposite sequence.

1.6 Mounting 1



- Check that there are 16 rollers between the markings of the camshafts gears.